



**MODULAR FUME HOODS:**

The modular style fume hood is designed to be a mobile encapsulated work surface. This unit allows the end user the flexibility of moving the unit where it is needed, from classroom to class room or within the lab. This mobile feature also gives the unit the flexibility to be stowed away when not in use.

The hood is constructed of furniture steel and painted with a chemical resistant finish. The frame is 16 gauge square steel tube welded together with trimmed out clear lexan plexi glass walls. One side of the hood has a swinging gate type sash that is suspended from a continuous hinge. The cap encloses the blower and single tube fluorescent light. The fan outlet is 2" in diameter and allows for a flexible duct connection. The unit has four independently locking wheels and a 1" thick black phenolic resin counter top. The frame can be painted to match top or be constructed from 304 stainless steel.

**Services-**

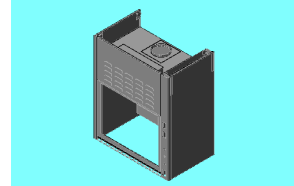
The modular hood comes standard with a combination light switch, blower switch, duplex, and gas receptacle. Also as a standard feature the 6' electrical cord, blower, and fluorescent light. The only optional feature is the flexible duct tube. This hood is also sold to operate on a pre-existing work surface.

**\*NOTE MODEL CFH IS WITHOUT BASE**

MODULAR FUME HOOD SIZES					* 1 ph. 115V. 60hz
MODEL NO.	WIDTH	HEIGHT	DEPTH	EXHAUST DUCT	BLOWER SIZE
100-036-MFH	36"	64 1/2"	25"	2" DIAMETER	3000 RPM
100-036-CFH *	36"	29 1/2"	25"	2" DIAMETER	3000 RPM

**Applications:** K thru High School

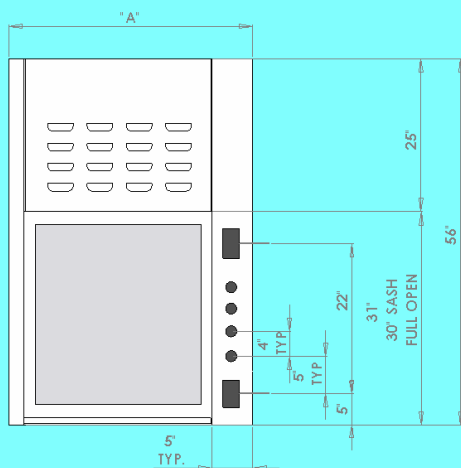
**Added Accessory Options:** Non-locking casters, dished work surface, epoxy resin work surface



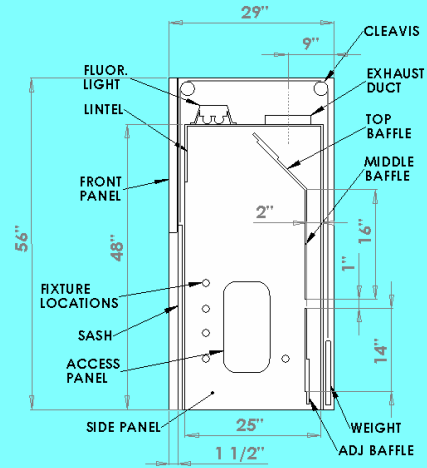
**SINGLE SIDED HOODS:**

This hood uses the Slim Wall post on one side and a full size Flat Face post on the other. Typically the right side post is the 5" wide full service post. The hood is constructed of 16 and 18 gauge carbon steel. Post, front panel, & side panels are removable. All interior components will be manufactured from white Chem Block poly resin. One access panel on the full post side and removable baffles. Standard features include fluorescent light and switch with one 115v. duplex.

SINGLE SIDED HOOD SIZES				
MODEL NO.	"A" WIDTH	HEIGHT	DEPTH	ROUND EXHAUST DUCT
100-030-SSH	30"	56"	29"	8"
100-036-SSH	36"	56"	29"	8"
100-047-SSH	47"	56"	29"	9"
100-048-SSH	48"	56"	29"	9"
100-058-SSH	58"	56"	29"	10"
100-060-SSH	60"	56"	29"	10"



FRONT VIEW



SIDE VIEW